



Eduardo Úrculo Cultural Center Ventanilla's Neighborhood, Madrid

CLIENT	Madrid City Council
PROJECT DATE	2006-2009
LOCATION	Madrid, Spain
FIELD OF ACTION	Structural project and Technical Assistance

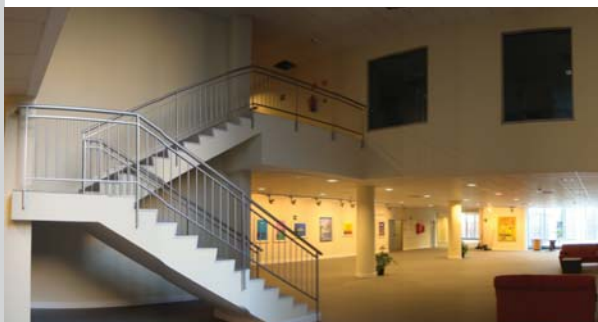
The building, in elevation, consists of three underground basement floors: ground floor, three above ground floors and rooftop. Below the ground level, the general plan of the building accommodates in a rectangular shape plot. Above ground there are three clearly differentiated modules (for showrooms and workshops, a library and auditorium) and its connection modules.

The module for showrooms and workshops is distinguished by a turned plant and it is solved with a metallic structure and steel decking framework.

The library, placed in the central module, is characterized by its double-height areas. In the auditorium module, the amphitheater has been solved with a single 14.00 m slope span. Likewise, the mezzanine or former level has also been solved with a single span of 14.00 m and the slope required by



Eduardo Úrculo Cultural Center Ventanilla's Neighborhood, Madrid

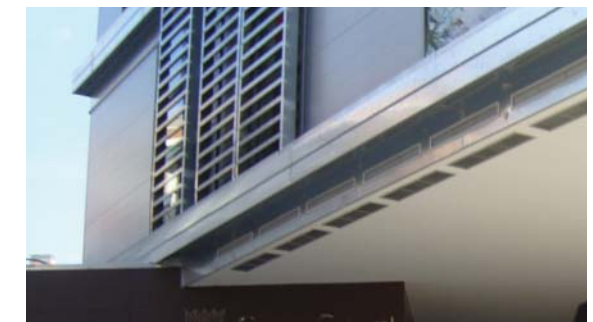


Finished building internal views

the latter two bodies. Like the underground floor, it has a reinforced concrete structure placed in situ (rectangular pillars, plants reticular basement and the rest by using solid slabs), with the exception of the frameworks over the auditorium that are solved with 40+10 cm slabs.

It is important to note that the below ground grid of pillars is different from the one over the ground. This fact has forced to dispose a floor slab in the transition (ground floor) so it would be able to bring down the charges from the upper floors pillars. This slab was 60cm thick.

As to the retaining structure, it is solved by screens and piles anchor, which reach the basement or ground floor, accommodating the slope of the street. The concrete screens serve as support, by pins, to the slabs at level -2 and -1. In addition to its top beam it has perimeter walls and pillars.



Finished building external views

ines
ingenieros consultores

C/ Nuñez de Balboa, 120
3D, 28006 Madrid, Spain
Tel.: +34 915237633

ines@inesingenieros.com
www.ines.es/en